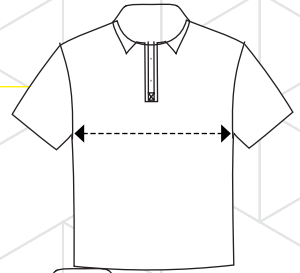


SIZING CHARTS

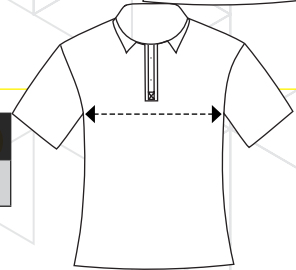
Men's Polos

Measurement (cm)	XS	S	M	L	XL	2XL	3XL	4XL	5XL	7XL	9XL	11XL	13XL
1/2 Chest Measurement*	44	48	52	56	60	64	68	72	76	84	92	100	108



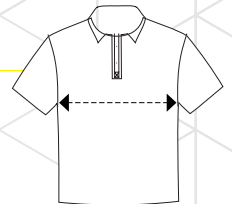
Women's Polos

Measurement (cm)	2	4	6	8	10	12	14	16	18	20	22	24	26	28
1/2 Chest Measurement*	N/A	38	40.5	43	45.5	48	50.5	53	55.5	58	60.5	63	65.5	68



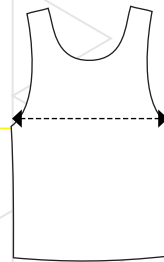
Children's Polos

Measurement (cm)	2	4	6	8	10	12	14
1/2 Chest Measurement*	32	34	36	38	40	42	45



Singlets

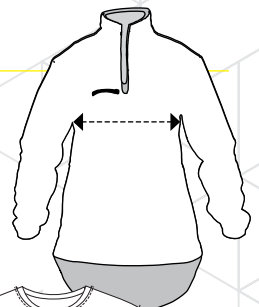
Measurement (cm)	XS	S	M	L	XL	2XL	3XL	4XL	5XL	7XL
1/2 Chest Measurement*	48	53	56	59	61	64	67	70	74	84



Polar fleece

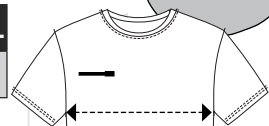
Day only Polar Fleece Jackets

Measurement (cm)	XS	S	M	L	XL	2XL	3XL	4XL	5XL	7XL
1/2 Chest Measurement*	57	60	63	66	69	72	75	78	81	90



Day/Night Polar Fleece Jackets

Measurement (cm)	XS	S	M	L	XL	2XL	3XL	4XL	5XL	7XL	9XL	11XL	13XL
1/2 Chest Measurement*	58	61	64	67	70	73	76	79	82	90	98	106	114



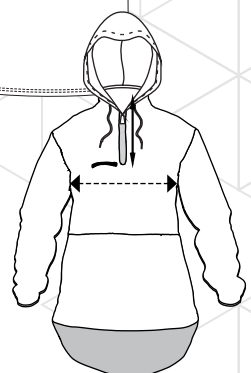
Polar Fleece T'Shirts

Measurement (cm)	XS	S	M	L	XL	2XL	3XL	5XL	7XL
1/2 Chest Measurement*	54	57	60	63	66	69	72	77	83



Day/Night Hoodies (PCH1075)

Measurement (cm)	XS	S	M	L	XL	2XL	3XL	4XL	5XL	7XL	9XL
1/2 Chest Measurement*	58	61	64	67	69.5	72	74.5	77	79.5	86	96



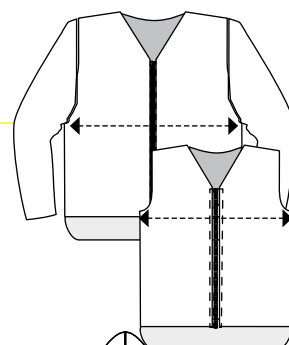
SIZING CHARTS

Safety Vests

Long and Sleeveless Safety Vests

Measurement (cm)	3XS	2XS	XS	S	M	L	XL	2XL	3XL	4XL	5XL	6XL	8XL	10XL	12XL	14XL
1/2 Chest Measurement*	42	46	51	56	60	63	66	69	72	75	78	81	87	95	103	111

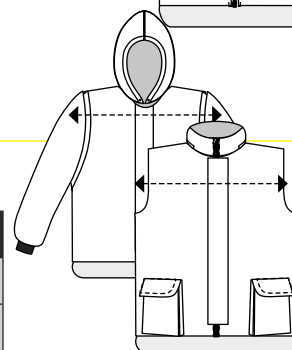
* 1/2 Bust/Chest measurement is taken at the widest point under the arms with the Garment lying flat.



Rainwear

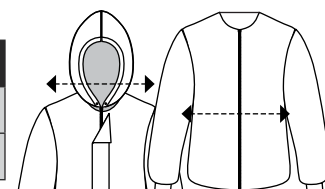
StormPro® Fleece lined Vests & Zip-off Sleeve Jackets

Measurement (cm)	XS	S	M	L	XL	2XL	3XL	4XL	6XL	8XL	10XL	12XL
1/2 Chest Measurement*	55	58	61	64	67	70	73	77	82	88	94	100
Garment Length (at Front)**	67	68	69	70	71	72	73	74	80	86	92	98



StormPro® Rain Jackets

Measurement (cm)	XS	S	M	L	XL	2XL	3XL	4XL	6XL	8XL	10XL	12XL
1/2 Chest Measurement*	58	61	64	67	71	74	77	80	86	92	98	104
Garment Length**	93	95	95	97	97	101	103	106	112	118	124	130



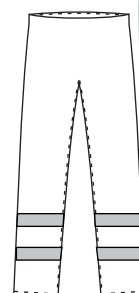
StormPro® Agri Spray Coverall

Measurement (cm)	XS	S	M	L	XL	2XL	3XL	4XL	6XL
1/2 Chest Measurement*	N/A	54	58	62	66	70	74	78	86
Full Garment Length****	N/A	162	167	172	177	182	187	192	202
1/2 Waist Unstretched +	N/A	38	41	44	47	50	53	56	62
1/2 Waist Stretched ++	N/A	48	51	54	57	60	63	66	72
Inside Leg Measurement +++	N/A	80	82	83	84	85	86	87	88



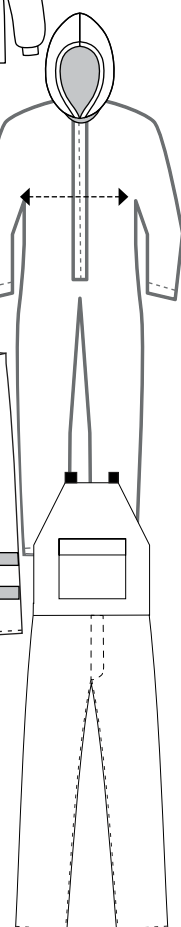
StormPro® Overtrousers

Measurement (cm)	XS	S	M	L	XL	2XL	3XL	4XL	6XL	8XL	10XL	12XL
1/2 Waist Unstretched +	28	31	33	35	38	41	44	47	52	60	68	76
1/2 Waist Stretched ++	50	52	54	56	59	62	65	67	69	73	75	77
Inside Leg Measurement +++	78	80	82	83	83	83	84	84	85	86	86	86



StormPro® Bib Overtrousers

Measurement (cm)	XS	S	M	L	XL	2XL	3XL	4XL	6XL	8XL
1/2 Waist Unstretched +	40	42	44	47	49	52	55	58	64	70
1/2 Waist Stretched ++	50	52	54	57	59	62	65	68	74	80
Inside Leg Measurement +++	78	80	82	83	84	85	86	87	88	90



* 1/2 Chest measurement is taken at the widest point under the arms with the Garment lying flat.

** 1/2 Waist unstretched is measured at the join above the pockets with the garment flat & smooth.

++ 1/2 Waist stretched is measured as above with the garment flat & stretched as far as the back elastic will allow.

+++ Inside Leg measurement is taken from the top of the leg seam in the crutch to the bottom of the leg hem.

SIZING CHARTS

Men's Shirts

Long and short sleeve shirts

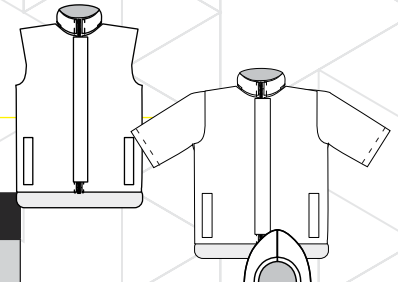
Measurement (cm)	XS	S	M	L	XL	2XL	3XL	4XL	5XL	7XL
1/2 Chest Measurement*	52.5	55	57.5	60	63	66.5	70	73.5	77	82



Oilskin Jackets

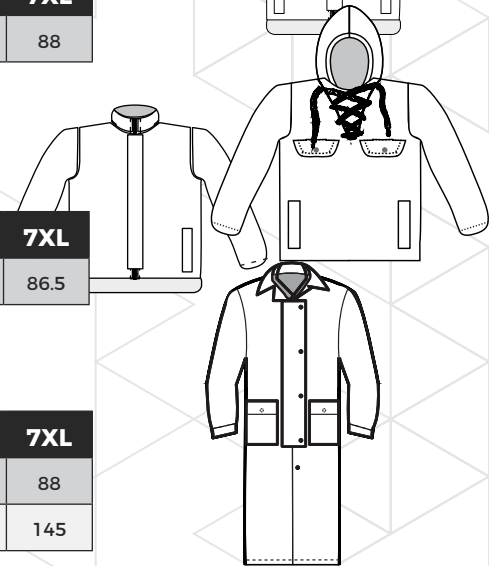
Sleeveless and Short Sleeve Vests, Long Sleeve Jacket

Measurement (cm)	S	M	L	XL	2XL	3XL	4XL	5XL	7XL
1/2 Chest Measurement*	59.5	62	64.5	67	69.5	72	76	80	88



Long Sleeve Lace-Up Parka

Measurement (cm)	S	M	L	XL	2XL	3XL	4XL	5XL	7XL
1/2 Chest Measurement*	64	66.5	69	71.5	74	76.5	79	81.5	86.5



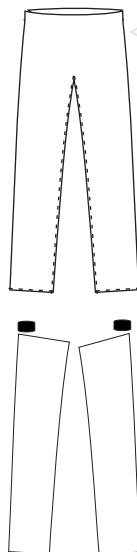
Long Riding Coat

Measurement (cm)	S	M	L	XL	2XL	3XL	4XL	5XL	7XL
1/2 Chest Measurement*	59.5	62	64.5	67	69.5	72	76	80	88
Garment Length***	120	122	124	126	128	130	132	137	145

Oilskin Overtrousers

Oilskin Overtrousers

Measurement (cm)	XS/S	M/L	XL/2XL	3XL/5XL
1/2 Waist Unstretched +	36	38	45	50
1/2 Waist Stretched ++	46	48	55	60
Inside Leg Measurement +++	64	65	67	75



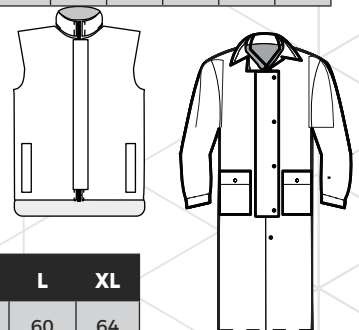
Oilskin Chaps

Measurement (cm)	XS/S	M/L	XL/2XL	3XL/5XL
Inside Leg Measurement +++	70	72	75	77

Children's Oilskin Jackets

Sleeveless and Long Riding Coat

Measurement (cm)	4	6	8	10	12	14	16
1/2 Chest Measurement*	42	44.5	47	49.5	52	54.5	57



Oilskin Hats

Measurement (cm)	M	L	XL
Inner Circumference +	56	60	64

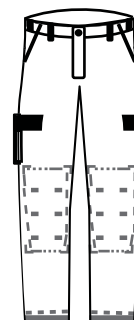
- * 1/2 Chest measurement is taken at the widest point under the arms with the Garment lying flat.
- ** 1/2 Waist unstretched is measured at the join above the pockets with the garment flat & smooth.
- ++ 1/2 Waist stretched is measured as above with the garment flat & stretched as far as the back elastic will allow.
- +++ Inside Leg measurement is taken from the top of the leg seam in the crutch to the bottom of the leg hem.

SIZING CHARTS

Men's Trousers and Shorts

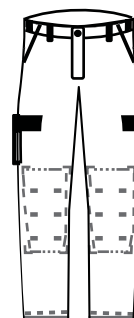
Cargo Trousers – With Belt Loops

Measurement (cm)	28" 72cm	30" 77cm	32" 82cm	34" 87cm	36" 92cm	38" 97cm	40" 102cm	42" 107cm	44" 112cm
Waist Unstretched	73	78	83	88	93	98	103	108	113
Waist Stretched	78	83	88	93	98	103	108	113	118
Inside Leg Length (Crutch Seam to bottom of Leg)	80	80	80	80	80	80	80	80	80
Measurement (cm)	46" 117cm	48" 122cm	50" 127cm	52" 132cm	54" 137cm	56" 142cm	58" 147cm	60" 153cm	62" 157cm
Waist Unstretched	118	123	128	133	138	143	148	153	158
Waist Stretched	123	128	133	138	143	148	153	158	163
Inside Leg Length (Crutch Seam to bottom of Leg)	80	80	80	80	80	50	80	80	80



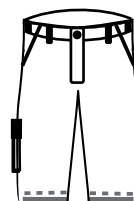
Cargo Trousers – Elastic Waist

Measurement (cm)	S	M	L	XL	2XL	3XL	4XL	5XL	7XL
Waist Unstretched	72	76	80	84	88	92	96	100	108
Waist Stretched	106	112	118	124	130	136	142	148	164
Inside Leg Length (Crutch Seam to bottom of Leg)	80	80	80	80	80	80	80	80	80



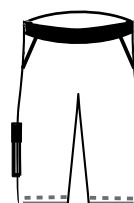
Cargo Shorts – With Belt Loops

Measurement (cm)	28" 72cm	30" 77cm	32" 82cm	34" 87cm	36" 92cm	38" 97cm	40" 102cm	42" 107cm	44" 112cm
Waist Unstretched	73	78	83	88	93	98	103	108	113
Waist Stretched	78	83	88	93	98	103	108	113	118
Inside Leg Length (Crutch Seam to bottom of Leg)	26	26	26	26	26	26	26	26	26
Measurement (cm)	46" 117cm	48" 122cm	50" 127cm	52" 132cm	54" 137cm	56" 142cm	58" 147cm	60" 153cm	62" 157cm
Waist Unstretched	118	123	128	133	138	143	148	153	158
Waist Stretched	123	128	133	138	143	148	153	158	163
Inside Leg Length (Crutch Seam to bottom of Leg)	80	80	80	80	80	50	80	80	80



Cargo Shorts – Elastic Waist

Measurement (cm)	S	M	L	XL	2XL	3XL	4XL	5XL	7XL
Waist Unstretched	72	76	80	84	88	92	96	100	108
Waist Stretched	106	112	118	124	130	136	142	148	164
Inside Leg Length (Crutch Seam to bottom of Leg)	26	26	26	26	26	26	26	26	26



Rugby Shorts

Measurement (cm)	S	M	L	XL	2XL	3XL	4XL	5XL	7XL
Waist Unstretched	72	76	80	84	88	92	96	100	108
Waist Stretched	106	112	118	124	130	136	142	148	164
Inside Leg Length (Crutch Seam to bottom of Leg)	8	8	8	8	8	8	8	8	8



- * 1/2 Chest measurement is taken at the widest point under the arms with the Garment lying flat.
- ** 1/2 Waist unstretched is measured at the join above the pockets with the garment flat & smooth.
- ++ 1/2 Waist stretched is measured as above with the garment flat & stretched as far as the back elastic will allow.
- +++ Inside Leg measurement is taken from the top of the leg seam in the crutch to the bottom of the leg hem.